



> A bold, modern, and polished visual entry statement that aids place, identity and wayfinding for ALKIMOS MetroNet: THE Threshold Station where bushland meets Perth's Urban Fringe <

Disc 1 - Concourse East - Land Side



> *Land Under Sun* references Seasonal change. The sun's radiation warms our Earth, and its light is the key energy source for plants. Earth orbits the sun<

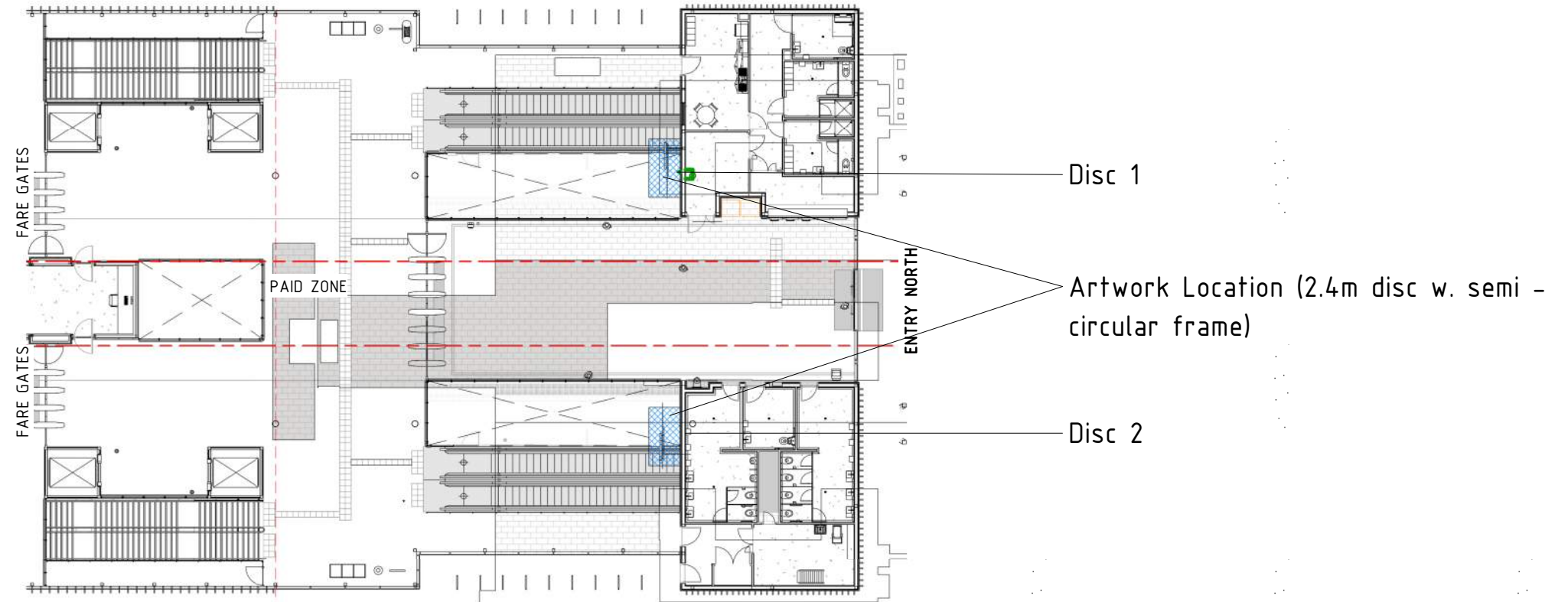
Disc 2 - Concourse West - Ocean Side



> *Moon Over Ocean* dialogues of tidal flows, as well as the planet and beyond. The moon has a large effect on ocean tides, and in turn tides have significant effect on the weather. Moon orbits Earth<

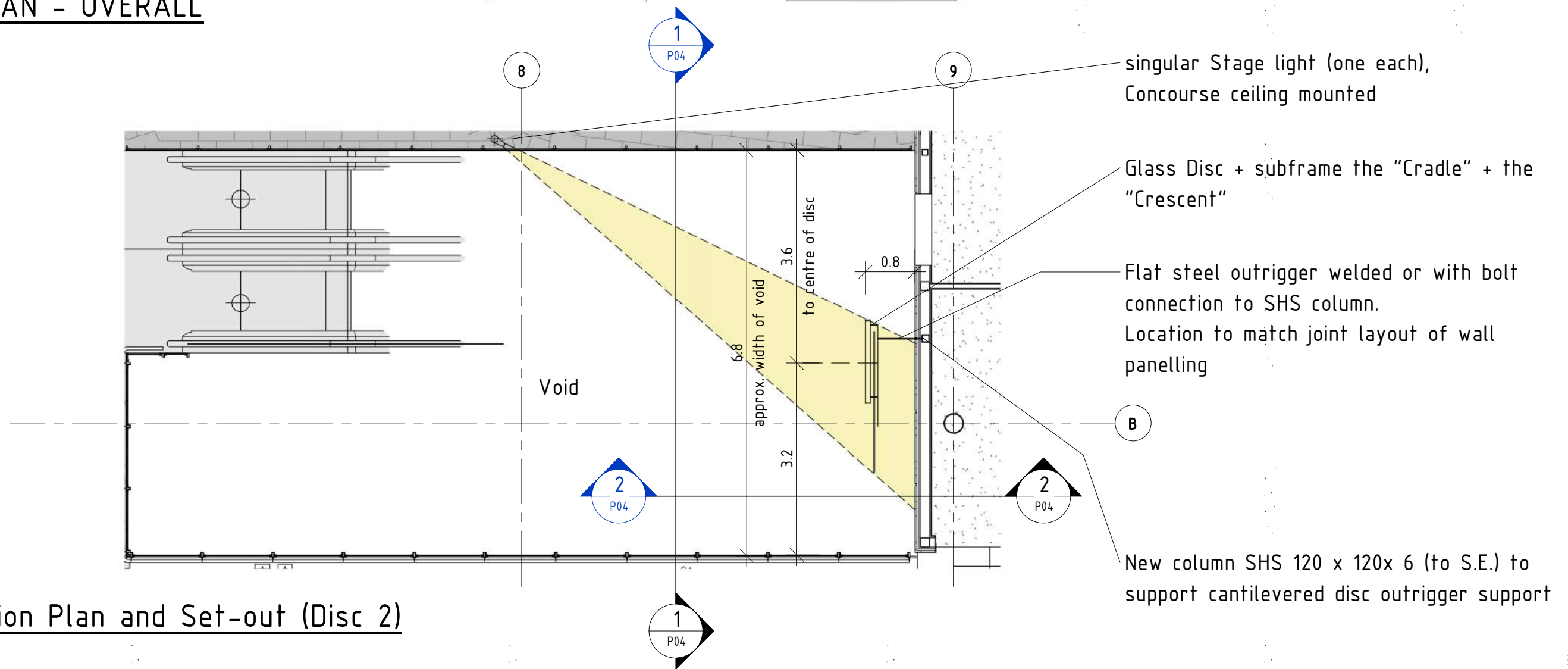
CONCOURSE PLAN - OVERALL

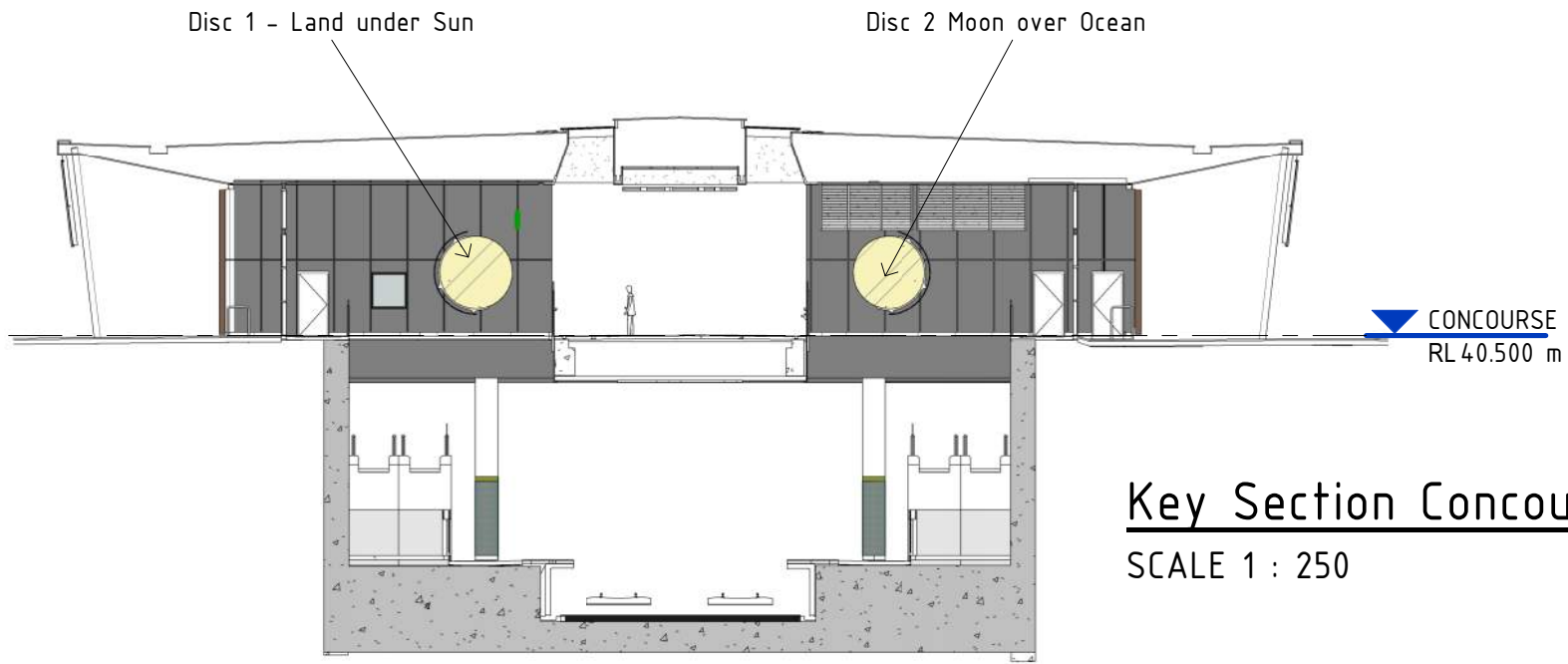
SCALE 1 : 300



Detailed Location Plan and Set-out (Disc 2)

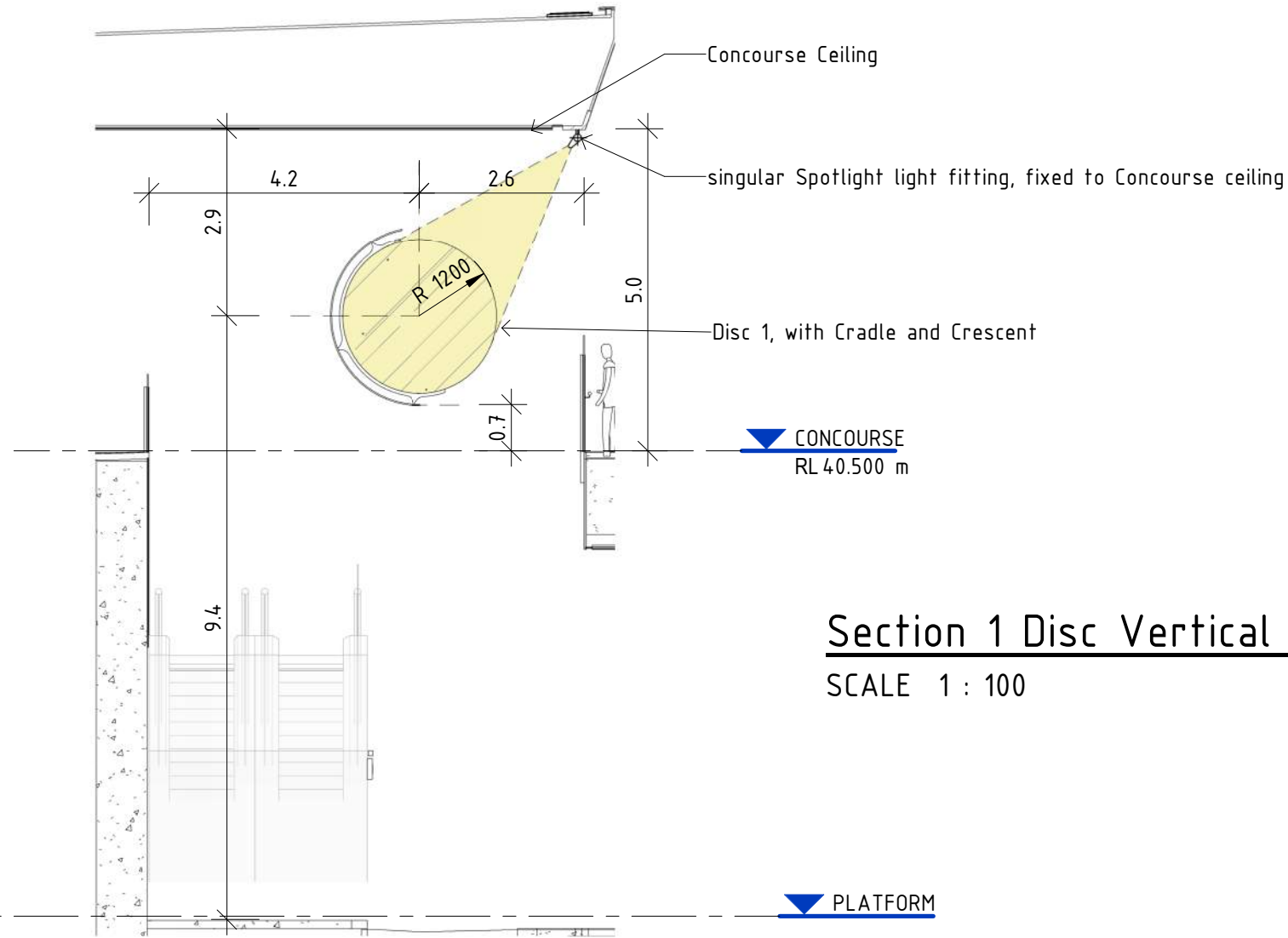
SCALE 1 : 75



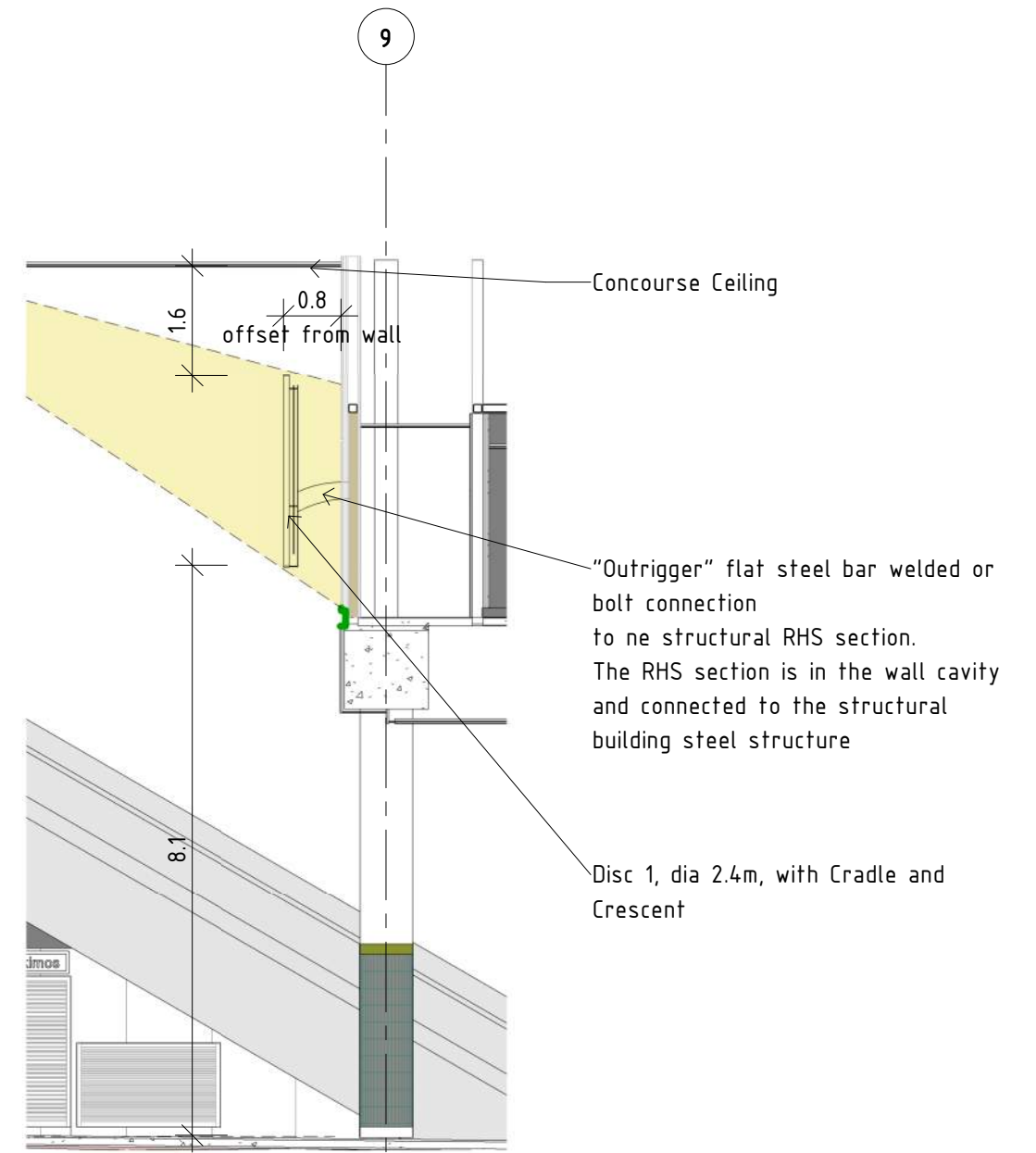


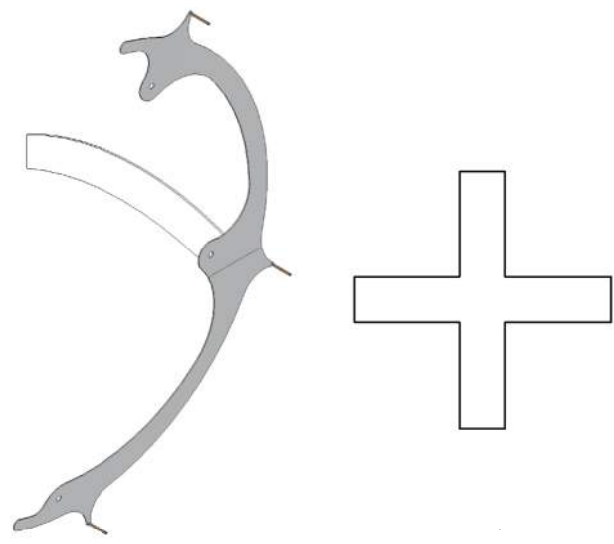
Key Section Concourse
SCALE 1 : 250

Section 2 Disc Vertical Set-out
SCALE 1 : 100

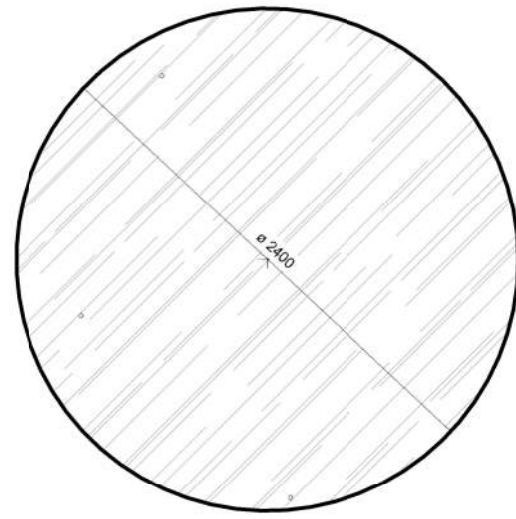


Section 1 Disc Vertical Set-out
SCALE 1 : 100

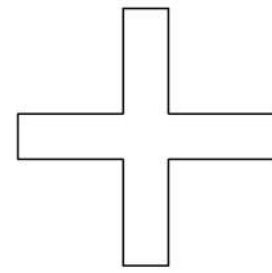




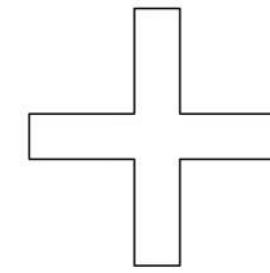
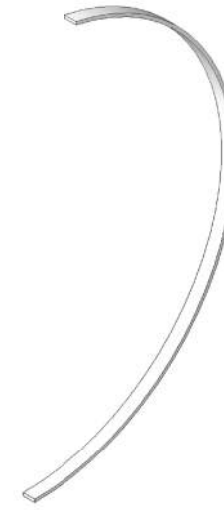
- The "Cradles"
- Structural flat G250 powdercoated 10mm steel plate:
 - laser cut to suit
 - supports glass disc via #3 typical single point stainless steel fixings
 - cantilevered from structural steel RHS (in wall) profile via flat steel plate , w. curved outline
 - anodized grey-(tbc)



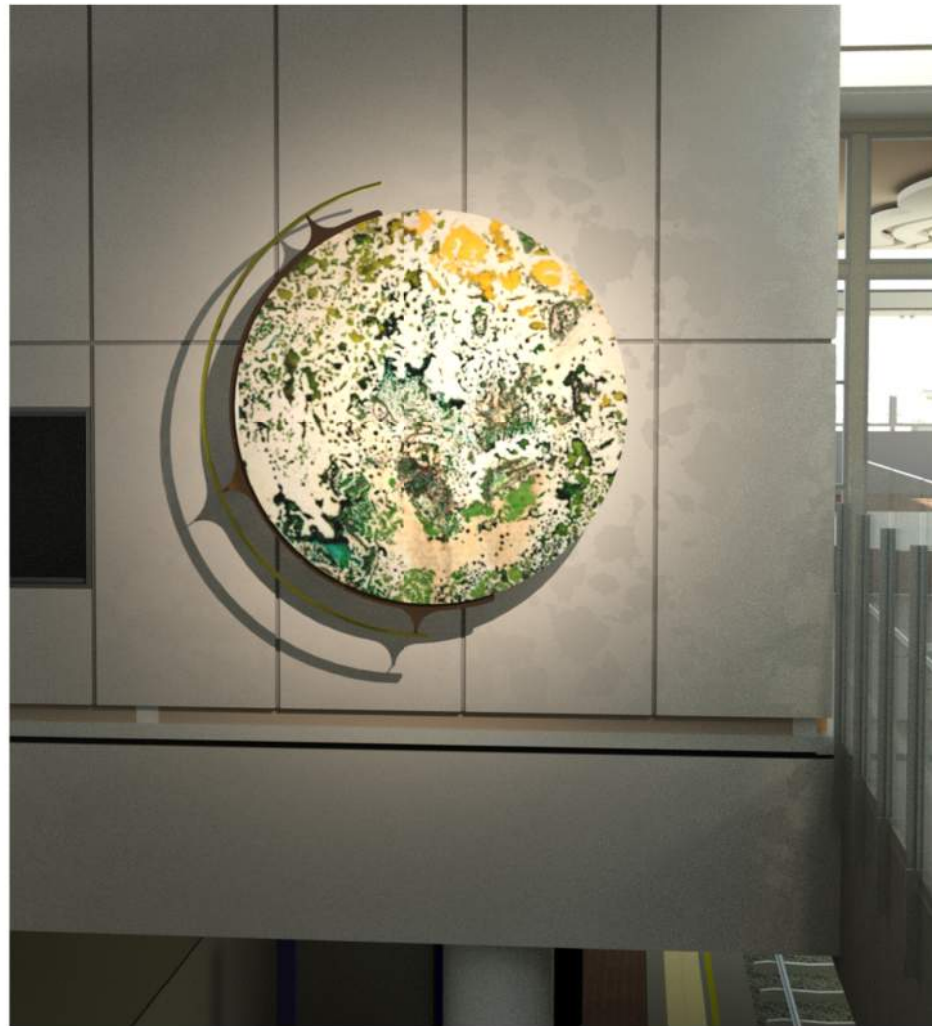
- The "Discs"
- 2.4m dia low iron clear, **13.52mm, toughened glass with SGP interlayer**
 - Highly durable and resistant to oxidization of seabreeze conditions
 - colour imagink print (Moon & Land)
 - 25 years warranty against fading
 - holes drilled to suit "Cradle" support frame with stainless steel fixings



- The "Crescents"
- Aluminium flar bar 80 x 20mm
 - Bent as shown
 - Anodized - #1 silver reign, #2 gold pearl
 - welded or bolt-fixed to Cradle via 120mm spacer sections



- The Lights:
- #1 LED commercial directional stage lightfitting per artwork,
 - intense beam focused on the artwork
 - mounted above the concourse for easy accessibility and maintenance.
 - Colour temperature tba



> The material selection of glass, steel and aluminium, being mined and manufactured from the sand and rock respectively, are fitting not only for their resonance with the concept of the artwork, but also for durability and low maintenance. Each disc will be highlighted by 2 ceiling mounted spotlights to enhance the luminosity of each artwork.

<

